



THERMOCONTROL

-PNEUMATIC PUMPS AND SPARE PARTS-
TH



Alcora delegation – Main Office
Ctra. Castellón – Alcora, Km. 20,
12110 Alcora
(Castellón), SPAIN
Tel.: +34 964 362 169

Onda delegation
C/Cantabria nº18,
Poligono industrial El colador,
12200 Onda (Castellón), SPAIN
Tel: +34 964 362 169

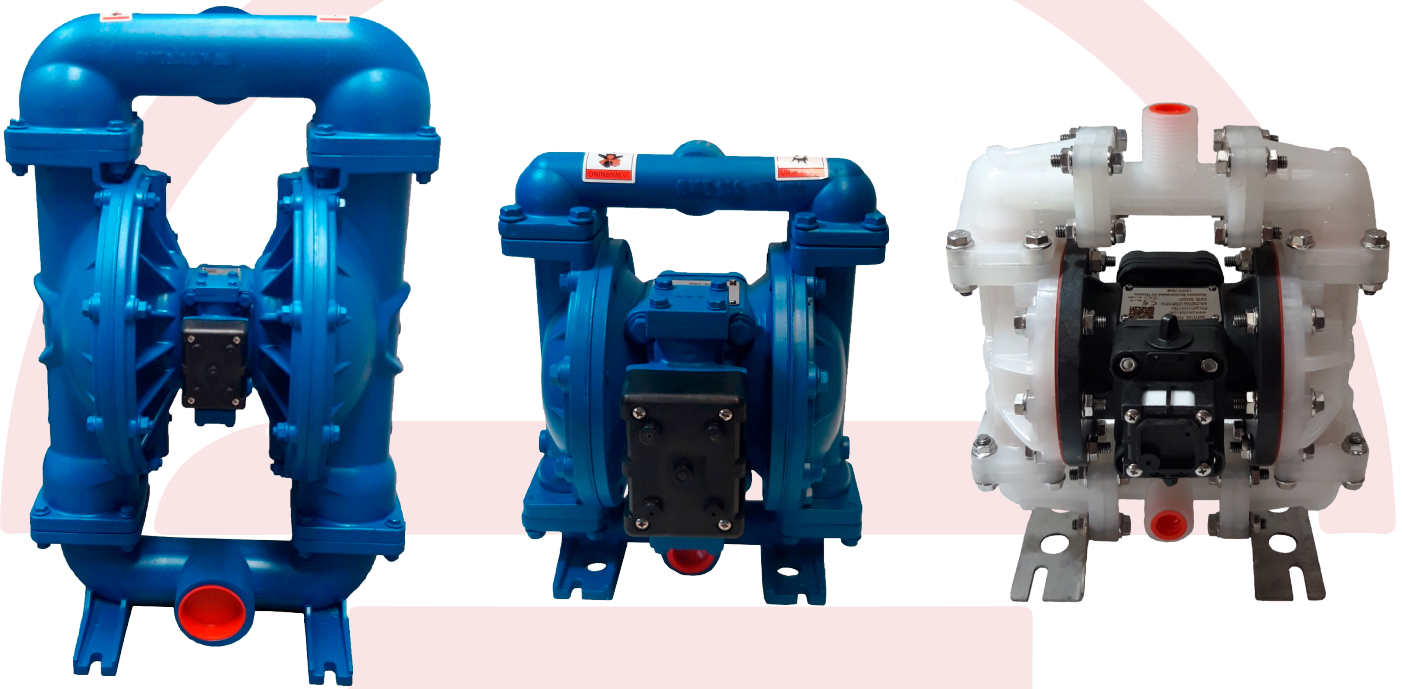
Paterna delegation
C/ Manyá nº34 Nave 13
Parque Empresarial Táctica,
46988 Paterna (Valencia), SPAIN
Teléfono +34 961 344 782

Algeria delegation
Cité Madina el Djadida nº 25,
Dar El Beida-Wilaya D'Alger
ALGERIA,
Teléfono +213 21 50 88 85



THERMOCONTROL

PNEUMATIC PUMPS FLUID TRANSPORT TH



CODE	DESCRIPTION	REFERENCE
105069	PNEUMATIC PUMPS THA-1/2 POLYETHYLENE/SANTOPRENE	TYPE S05B2P1TPBS000
102871	PNEUMATIC PUMPS THA-1 ALUMINUM/NEOPRENE	TYPE S1FB1ANWABS000
105062	PNEUMATIC PUMPS THA-1,5 ALUMINUM/NEOPRENE	TYPE S15B1ANWABS000
102873	PNEUMATIC PUMPS THA-2 ALUMINUM/NEOPRENE	TYPE S20B1ANNABS000
103747	PNEUMATIC PUMPS TH-3 ALUMINUM/NEOPRENE	TYPE S30B1ANNABS000

Alcora delegation – Main Office
Ctra. Castellón – Alcora, Km. 20,
12110 Alcora
(Castellón), SPAIN
Tel.: +34 964 362 169

Onda delegation
C/Cantabria nº18,
Poligono industrial El colador,
12200 Onda (Castellón), SPAIN
Tel: +34 964 362 169

Paterna delegation
C/ Manyá nº34 Nave 13
Parque Empresarial Táctica,
46988 Paterna (Valencia), SPAIN
Teléfono +34 961 344 782

Algeria delegation
Cit  Madina el Djadida n  25,
Dar El Beida-Wilaya D'Alger
ALGERIA,
Tel fono +213 21 50 88 85



THERMOCONTROL

REPUESTOS TH

DIAPHRAGM - Quantity per pump x2



CODE	REFERENCE	DESCRIPTION
60356	TYPE T286-008-365	NEOPRENE 1" PUMP THA-1
42863	TYPE T286-099-365	NEOPRENE 1,5" PUMP THA-1,5
1881	TYPE T286-007-365	NEOPRENE 2" PUMP THA-2
19574	TYPE T286-098-365	NEOPRENE 3" PUMP THA-3



CODE	REFERENCE	DESCRIPTION
29808	TYPE T286-095-354	SANTOPRENE 1/2" PUMP THP-1/2



CODE	REFERENCE	DESCRIPTION
46314	TYPE T286-007-360	BUNA 2" PUMP THA-2
106781	TYPE T286-098-360	BUNA 3" PUMP THA-3

SEAT - Quantity per pump x4



CODE	REFERENCE	DESCRIPTION
21860	TYPE T722-099-600	POLYETHYLENE 1/2" PUMP THP-1/2
45805	TYPE T722-098-550	POLYETHYLENE 1" PUMP THP-1
81219	TYPE T722-091-550	POLYETHYLENE 1,5" PUMP THP-1,5



CODE	REFERENCE	DESCRIPTION
28064	TYPE T722-040-365	NEOPRENE 2" PUMP THA-2
29086	TYPE T722-090-365	NEOPRENE 3" PUMP THA-3



CÓDIGO	REFERENCE	DESCRIPTION
106795	TYPE T722-040-360	BUNA 2" PUMP THA-2
106796	TYPE T722-090-360	BUNA 3" PUMP THA-3

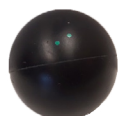
BALL - Cantidad por bomba x4



CODE	REFERENCE	DESCRIPTION
36260	TYPE T050-028-365	NEOPRENE 1" PUMP THA-1
22542	TYPE T050-005-365	NEOPRENE 1,5" PUMP THA-1,5
15148	TYPE T050-017-365	NEOPRENE 2" PUMP THA-2
51883	TYPE T050-014-365	NEOPRENE 3" PUMP THA-3



CODE	REFERENCE	DESCRIPTION
21861	TYPE T050-027-354	SANTOPRENE 1/2" PUMP THP-1/2



CODE	REFERENCE	DESCRIPTION
28901	TYPE T050-017-360	BUNA 2" PUMP THA-2
37890	TYPE T050-014-360	BUNA 3" PUMP THA-3

Alcora delegation – Main Office
Ctra. Castellón – Alcora, Km. 20,
12110 Alcora
(Castellón), SPAIN
Tel.: +34 964 362 169

Onda delegation
C/Cantabria nº18,
Poligono industrial El colador,
12200 Onda (Castellón), SPAIN
Tel: +34 964 362 169

Paterna delegation
C/ Manyá nº34 Nave 13
Parque Empresarial Táctica,
46988 Paterna (Valencia), SPAIN
Teléfono +34 961 344 782

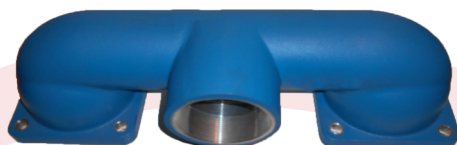
Algeria delegation
Cit  Madina el Djadida n  25,
Dar El Beida-Wilaya D'Alger
ALGERIA,
Tel fono +213 21 50 88 85



THERMOCONTROL

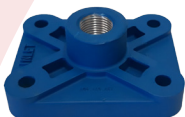
REPUESTOS TH

MANIFOLD, DISCHARGE



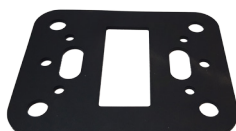
CODE	REFERENCE	DESCRIPTION
105199	TYPE T518-152-156	ALUMINUM 1,5" PUMP THA-1,5
33333	TYPE T518-146-156E	ALUMINUM 2" PUMP THA-2
29085	TYPE T518-144-156	ALUMINUM 3" PUMP THA-3

SETS



CODE	REFERENCE	DESCRIPTION
105089	TYPE T165-118-157	AIR INLET CAP ASSEMBLY THA-1 THA-2 THA-3 TIPO S1F S20 S30
59251	TYPE T031-173-000	AIR VALVE ASSY THA-1 THA-2 THA-3 TIPO S1F S20 S30
42867	TYPE T095-110-000	PILOT ASSEMBLY THA-1 THA-2 THA-3 TIPO S1F S20 S30

JOINS



CODE	REFERENCE	DESCRIPTION
71823	TYPE T360-114-360	JOIN TH-1 TH-2 TH-3 TIPO S1F S20 S30
42868	TYPE T360-093-360	JOIN TH-1 TH-2 TH-3 TIPO S15 S20 S30
34278	TYPE T360-104-379	JOIN TH-1 TH-2 TH-3 TIPO S15 S20 S30

AXIS



CODE	REFERENCE	DESCRIPTION
46318	TYPE T685-040-120	AXIS THA-1 THA-2 THA-3 TIPO S1F S20 S30

Alcora delegation – Main Office
Ctra. Castellón – Alcora, Km. 20,
12110 Alcora
(Castellón), SPAIN
Tel.: +34 964 362 169

Onda delegation
C/Cantabria nº18,
Poligono industrial El colador,
12200 Onda (Castellón), SPAIN
Tel: +34 964 362 169

Paterna delegation
C/ Manyá nº34 Nave 13
Parque Empresarial Táctica,
46988 Paterna (Valencia), SPAIN
Teléfono +34 961 344 782

Algeria delegation
Cit  Madina el Djadida n  25,
Dar El Beida-Wilaya D'Alger
ALGERIA,
Tel fono +213 21 50 88 85